



Dear Parents,

We are in the midst of a global pandemic. Schools are prominent social institutions and if we have to make certain changes in the educational process during these times we will do so.

So let's shift gear from the school being the hub of learning to school home learning.

We at M.S. School is taking an initiative in this regard and will be sharing worksheets, certain activities to be done and their observations being recorded and some reading comprehension.

We shall also be sharing certain links for the students to follow.

The students may use the notebooks that were being used in the previous session to write down the answers.

So parents, let's collaborate and utilise this time to continue with the process of learning.

સુજ્ઞ વાલીશ્રી,

આજે આપણે એક વૈશ્વિક મહામારીમાંથી પસાર થઈ રહ્યા છીએ. શાળાઓ એક મુખ્ય સામાજિક સંસ્થા છે અને આ સમયમાં આપણે આપણી શૈક્ષણિક પ્રણાલીમાં પરિવર્તન લાવવાનું હોય તો આપણે તે ચોક્કસપણે કરીશું.

તો આપણે સૌ સાથે મળીને આપણી આ કેન્દ્રબિંદુ સમાન શાળાનો ઘર સુધીનો અભ્યાસ શરૂ કરીએ.

M.S.સ્કુલે આ પરિસ્થિતિમાં ઘરેથી અભ્યાસ કરાવવાની પહેલ શરૂ કરી છે અને તેમાં પ્રયત્નશીલ થઈને વર્કશીટ, વાંચન, ચોક્કસ પ્રવૃત્તિઓ કરાવશે અને તેનું નિરીક્ષણ પણ નોંધવામાં આવશે. આપણે બધા માટે કેટલીક ચોક્કસ Links પણ વિદ્યાર્થીઓને અનુસરવા આપીશું.

જવાબ લખવા માટે વિદ્યાર્થીઓ અગાઉના સત્રમાં વપરાયેલી નોટબુક્સનો ઉપયોગ કરી શકશે.

તો વાલીશ્રીઓ, આ સર્જનાત્મક પ્રવૃત્તિમાં ચાલો આપણે સૌ સહયોગ કરીએ અને આ સમયમાં અભ્યાસની પ્રવૃત્તિ સતત ચાલતી રહે તે માટે સહયોગી બનીએ.

**Q - 1. Tick (✓) the correct answer.**

- What does granny give to mona ? [a]. raisins [b]. beans [c]. flour [d]. sugar
- What does the dog do ?
[a]. It brings the seeds. [b]. It hits the pile of dirt. [c]. It makes the flour. [d]. It gets raisins.
- Why does smiley like the outside world ?
[a]. The air is dirty. [b]. There are many people.
[c]. The air is so fresh and there is so much to see. [d]. Outside world looks nice to him.
- Whom does smiley ask for something to eat ? [a]. a mouse [b]. a horse [c]. his mother [d]. all of these
- Who carries smiley home ? [a]. a mouse [b]. a horse [c]. a man [d]. mother hen
- Which tree does munmun grow up to be ? [a]. mango [b]. neem [c]. gulmohar [d]. banyan
- The sound 'pitter - patter' is the sound of [a]. wind [b]. sea [c]. rain [d]. river
- Where is Gappu sitting ?
[a]. On the Giraffe. [b]. On the elephant. [c]. On the tree. [d]. on the log.
- "How can you be friends with him ?" Who says this ?
[a]. Zimbo [b]. Kitty [c]. Mickey [d]. Joomba
- What is the name of the butterfly ?
[a]. Mickey [b]. Gappu [c]. Rangeela [d]. Joomba

Q - 2. Write the rhyming words.

- Walk - _____
- Cow - _____
- dry - _____
- tail - _____
- man - _____

Q - 3. Match the following.

- Smiley [a]. rude
- Mouse [b]. naughty
- Mona is happy [c]. with its paw.
- The rooster brings [d]. to make a cake that grows.
- The dog hits the pile of mud [e]. sugar for mona's cake.
- Horse [f]. loving
- Mother hen [g]. kind

Q - 4. Complete the poem.

- I can talk _____ rain.

Q - 5. Answer the following.

- Why does Granny give Mona last year's bean pod ?
- Has anyone seen the wind ?
- Whom does smiley meet in the outside world ?
- Where is Munmun sleeping ?
- How do Zimbo and Kitty spend their time ?

Q - 2. Read the text and answer the following questions.

Shyamu is making pots. Four pots are drying in the sun. All the pots are red. His wife is making yellow flowers on the pots. Two pots are ready.

- Who is making pots ?
- How many pots are drying in the sun ?
- What is the colour of the pots ?
- How many pots are ready ?

Q - 3. Write the paragraph with good hand writing.

"Who are you ? Kitty asks the squirrel. "I am Mickey, I am new to this jungle " answers the squirrel.

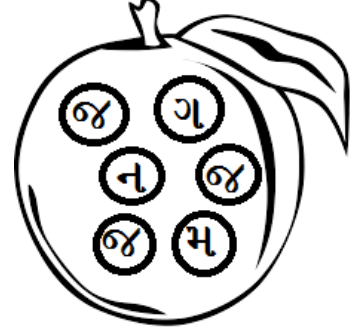
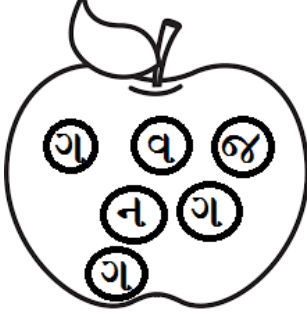
"Why are you laughing ?" ask kitty again. "I see that you are playing with giraffe. I find it very funny" says Mickey. "Jimbo is my childhood friend ", says Kitty with smile.



પ્રશ્ન:1. અ થી અઃ (સ્વર) લખો.

| | | | | | | | | | | | |
|--|--|--|--|--|--|--|--|--|--|--|--|
| | | | | | | | | | | | |
|--|--|--|--|--|--|--|--|--|--|--|--|

પ્રશ્ન:2. ઓળખો અને રંગ પૂરો.



પ્રશ્ન:3. સરખા શબ્દો સાથે જોડકા જોડો.

ગાન

નામ

ગામ

જાગ

જાન

જાગ

જાન

ગાન

નામ

ગામ

પ્રશ્ન:4. ચિત્ર જોઈ ખૂટતા અક્ષરો લખો.



_____ ન



_____ જર



પતં _____



પે _____

પ્રશ્ન:5. ક થી જ (વ્યંજન) લખો.

| | | | | | |
|--|--|--|--|--|--|
| | | | | | |
| | | | | | |
| | | | | | |
| | | | | | |
| | | | | | |
| | | | | | |

પ્રશ્ન:6. જોઈને લખો.

રાજા _____

સેર _____

છાબ _____

એક _____

છાજ _____

કાનન _____



प्रश्न:1. कविता की पंक्तियाँ पूर्ण कीजिए।

कंठ _____ है, _____ अनेक है।
किंतु _____ एक, _____ एक॥

प्रश्न:2. दिए गए प्रश्नों के उत्तर में ✓ का निशान लगाइए।

- भारत के संग कैसे रूप रंग है ? [a]. विविध [b]. एक [c]. समान
- महाराज ! आप अपने घुटनों को थोड़ा सा मोड़ लीजिए। [a]. तेनालीराम ने [b]. पहलवान ने [c]. मंत्री ने
- सुदामा कृष्ण के लिए क्या उपहार ले गए ? [a]. दूध [b]. मक्खन [c]. भुने चावल
- मीठा खाजा कैसा है ? [a]. सस्ता [b]. खस्ता [c]. नमकीन
- रानी की दोस्त का क्या नाम था ? [a]. सुमन [b]. अलका [c]. राधा
- पेंसिल से क्या करना बहुत आसान है ? [a]. हँसना [b]. लिखना [c]. मिटाना

प्रश्न:3. दिए गए शब्दों का एकवचन या बहुवचन से मिलान कीजिए।

टोली

कविताएँ

खिलौने

बोलियाँ

एकवचन

बहुवचन

किताब

खिड़की

चिड़िया

अलमारियाँ

प्रश्न:4. समान अर्थ वाले शब्द छाँटकर लिखिए।

स्नेह - _____

दुनिया - _____

[प्यार , साथ , सूरत , पहेरेदार , उपहार जग]

भेट - _____

संग - _____

द्वारपाल - _____

रूप - _____

प्रश्न:5. सही मात्रा लगाकर शब्द बनाईए। [ण , ऐ , औ , ि]

द व् _____ र क

र _____ न _____

प _____ ट ल

_____ च _____ ड या

च _____ व ल

अलक _____

प्रश्न:6. दिए गए शब्दों में से सही शब्द पर गोला लगाइए।

लाबता

दोस्ती

आछुक

मुलायम

वदात

तालाब

तीस्दो

कछुआ

लायममु

तदाव

बलाता

स्तीदो

छुआक

मुयलाम

दावत

प्रश्न:7. दिए गए वाक्यों में (✓) या (x) का निशान लगाइए।

1. पुनपुन ने पौधों में पानी नहीं डाला। ☐

3. जर्मनी में ग्रेफाईट की चट्टानें मिली। ☐

5. शार्पनर पेंसिल को मोटा बना देता है। ☐

2. लट्टू पर दाग बने हुए थे। ☐

4. हरियाली से हवा भी शुद्ध और ठंडी रहती है। ☐



Q - 1. Write the numbers name for following numbers.

1. 148 - _____
2. 164 - _____
3. 678 - _____
4. 793 - _____

Q - 2. Write the expanded form of the following.

1. 146 - _____
2. 180 - _____
3. 645 - _____
4. 208 - _____

Q - 3. Write the place value and face value of the following.

1. 112 - _____ 2. 998 - _____

Q - 4. Add the following.

$$\begin{array}{r} 68 \\ + 75 \\ \hline \end{array}$$

$$\begin{array}{r} 55 \\ + 33 \\ \hline \end{array}$$

$$\begin{array}{r} 727 \\ + 89 \\ \hline \end{array}$$

$$\begin{array}{r} 639 \\ + 53 \\ \hline \end{array}$$

Q - 5. Find the product.



X



X



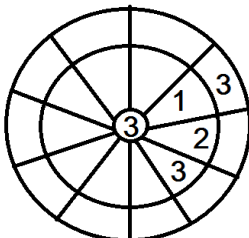
X



Q - 6. Tick (✓) the suitable answer of the following.

- | | | | | | | | |
|----|----|---|----|---|----|----|----|
| 1. | 19 | - | 14 | = | 5 | 9 | 8 |
| 2. | 13 | - | 13 | = | 6 | 0 | 1 |
| 3. | 12 | - | 0 | = | 0 | 12 | 11 |
| 4. | 88 | - | 44 | = | 22 | 44 | 23 |
| 5. | 38 | - | 17 | = | 21 | 11 | 22 |
| 6. | 65 | - | 23 | = | 42 | 24 | 44 |
| 7. | 84 | - | 22 | = | 26 | 62 | 63 |
| 8. | 66 | - | 11 | = | 77 | 45 | 55 |

Q - 7. Complete the multiplication wheel.



**Q - 1. Answer the following questions.**

- What happens when the seeds are put in wet soil ? _____
- How is wool used by us ? _____
- What does the stomach do ? _____

Q - 2. Name the following.

- Name two climbers. _____
- Name the homes of snake- _____ rabbit - _____
- Name two things we get from honeybees. _____
- Name the plants of each from which are get. spices - _____ medicines - _____

Q - 3. Tick (✓) the correct answers.

- | | | | |
|--|------------------|---------------|-------------|
| 1. Tall and strong plants are called | [a]. creepers | [b]. climbers | [c]. trees |
| 2. A plant that grows in water is | [a]. cactus | [b]. neem | [c]. lotus |
| 3. We make chapatis from | [a]. wheat | [b]. pulses | [c]. spices |
| 4. A snake lives in | [a]. burrow | [b]. hole | [c]. den |
| 5. A zebra eats | [a]. dead animal | [b]. flesh | [c]. grass |
| 6. We get milk from the | [a]. bull | [b]. deer | [c]. cow |
| 7. Cheese is made from the | [a]. rice | [b]. milk | [c]. wheat |
| 8. Which is an internal organ ? | [a]. head | [b]. brain | [c]. nose |
| 9. Total numbers of bones in our body is | [a]. 203 | [b]. 206 | [c]. 209 |
| 10. Which vegetable is eaten raw ? | [a]. carrot | [b]. brinjal | [c]. potato |

Q - 4. Complete the sentence with the help of the words given below.

[edible , bamboo , water , creepers , forests , energy , heart , plants , dog , move]

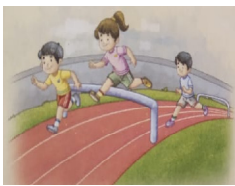
- _____ grow along the ground.
- Plants need air , sunlight and _____ to make food.
- Oils used for cooking are called _____ oil.
- We get paper from _____ plant.
- Wild animals live in _____.
- Herbivores eat _____.
- A _____ guards our homes.
- The _____ pumps blood to all parts of the body.
- Muscles make the bones _____.
- Food gives us _____ to work , play and grow.

Q - 5. Circle the odd one.

- | | | |
|-------------|------------|--------|
| 1. rice | potato | pulses |
| 2. elephant | horse | hen |
| 3. fruits | vegetables | wheat |
| 4. Tulsi | Neem | Stem |
| 5. Cow | Honey bee | Goat |

**Q -1. Tick the correct answers.**

1. It is the largest and the heaviest aquatic animal in the world . a) shark b) Blue whale c) Walrus
2. The group of Zebras is called _____. a) Zeal b) bloat c) pod
3. A bat is a sports equipment for playing _____. a) badminton b) skating c) cricket
4. where will you throw peels of fruits and vegetables ? a) Green dustbin b) Blue dustbin c) Red dustbin
5. What is a group of lions called ? a) pride b) kine c) flock
6. what is a group of crocodile called ? a) Zeal b) Bask c) Troup
7. which of the following is located in France ? a) opera house b) Eiffel Tower c) Great pyramids



8. a) short jump b) Hurdle race c) Long race



9. a) Three legged race b) Two legged race c) Short race



10. a) seahorse b) crocodile c) Climbing perch

Q -2. Tick () for good manners and cross (x) those that do not.

1. You entered the house with dirty shoes.
2. You left the room after switching off the light.
3. You threw the banana peel in the dustbin .
4. Listen music at a very loud volume.
5. Throw garbage in the bin.
6. Make paper bags with old newspapers for shopping .
7. waste water while bathing.
8. use the water left in the bottle to water plants.
9. Using disposable utensils instead of reusable utensils.
10. putting plastic wrappers and tin boxes in the blue dustbin.
11. Taking more food than you can eat.
12. buying a new school bag every year.
13. Donating old clothes and furniture to the needy people.
14. If a strangers gives you an ice cream you should take the ice cream.
15. If a stranger knocks at the door and you are alone in the house , You should not open the door.